



lionSTEEL

lionSTEEL® Knives Italy 2022

LionSTEEL, a family passion

I am convinced that people do not come into our lives, or our businesses, by chance. Every encounter is important for the growth of both parties. Our first 50 years in business have confirmed this belief. This is why I want to thank everyone who dedicates a significant amount of their time to us, from the very bottom of my heart. This time is precious, to learn from one another, to improve as colleagues and as people, and to cultivate a creative future together that has real value.

Gianni Pauletta, CEO



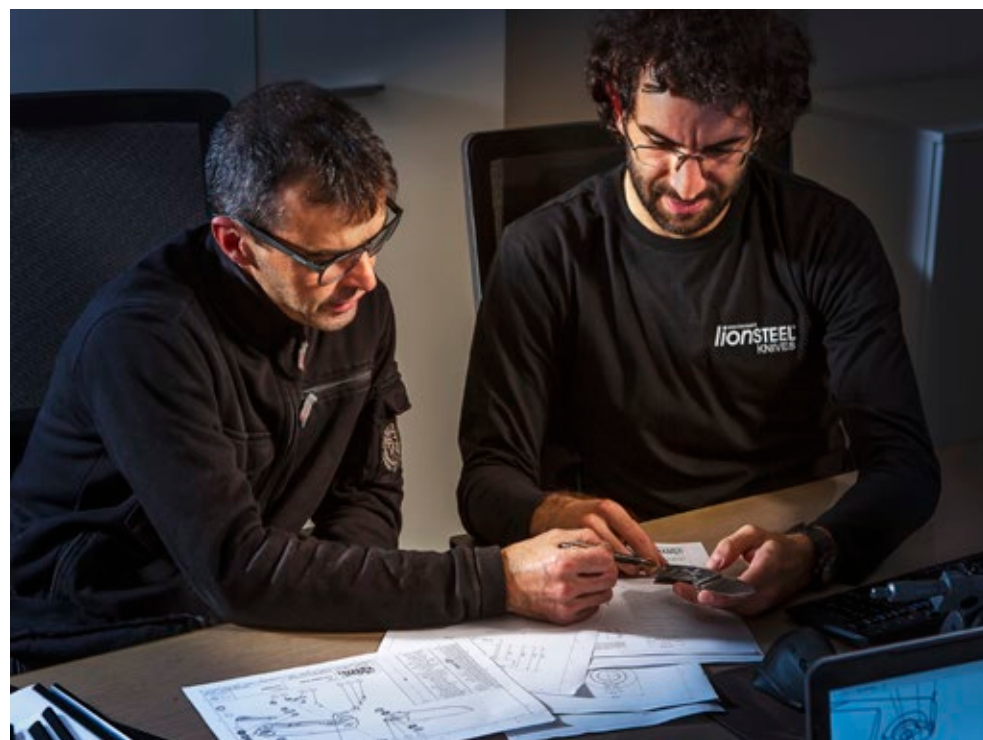
A brief tour of the company

Fifty years of history are what build a company's identity, interlaced with methods, tools, people and places. LionSTEEL's new premises encompass our journey of growth and all of the decision we have made so far.

Light fills the spaces and a calm green view lies outside the window. We aspire to create order and balance between privacy and transparency. This is how we do things; this is our style and the way we aspire to be. The different spaces in our world of work are brought together by the same company spirit.

International AWARDS





The five solid pillars of our company

Design:

"Start by doing what's necessary, then do what's possible; and suddenly you are doing the impossible."

Saint Francis of Assisi

Production:

"The future is something we build."]]

Tim Berners-Lee

Assembly:

"Great things are done by a series of small things brought together."

Vincent Van Goghe

Organization:

"Obtaining maximum movement from minimal shift."

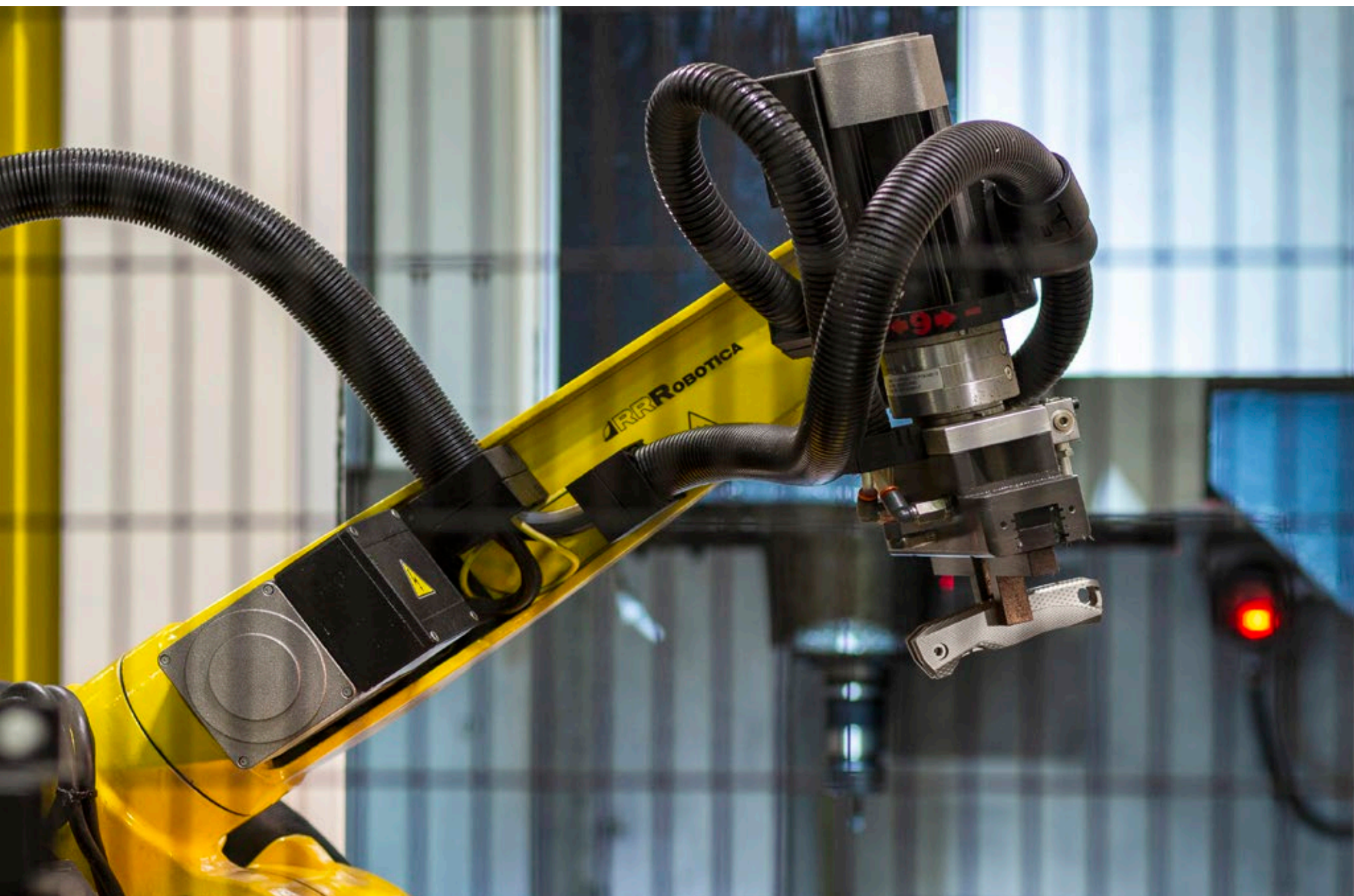
Pietrangelo Buttafuoco

Marketing:

"Find the market niche firts, and then make the remarkable product not the other way around."

Seth Godin





The value of the product comes from a smart interaction



between human hands and the logic of the Machine.

INNOVATION & TECHNOLOGY

TiDust: prime exemple innovation by LionSTEEL.
The handle is made by melting titanium powder using a laser.
It is the first knife in the world made using DMLS technology.



lionSTEEL®



ROTOBLOCK
(Removable flipper system)

This safety mechanism was created with the first Solid Knife: it locks the blade in place while the knife is in use, so there is no risk of it accidentally closing.



ReF *(Removable flipper system)*

You choose how you want to use your knife: you can unscrew the flipper using a torx if you don't need it, and insert the second screw included in the box in its place. The screw fits perfectly in the hole at the bottom of the blade.



H WAYL *(Hide What Annoys You Lionsteel)*

This system makes it easier to pull out your knife and put it away in your pocket. The clip is hidden when using the knife and you can't feel it pressing against the palm of your hand when holding the knife.



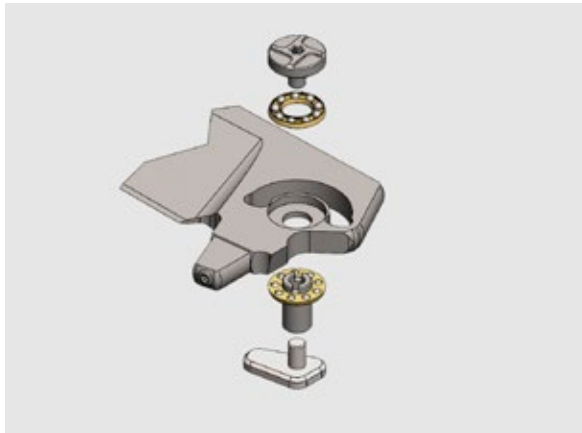
NFC
lionSTEEL

NFC technology has been adopted for different payment methods and logistics systems using cards and smartphones. Here, you can use it to check the ROK product details, activate the warranty, contact customer services and find out more about LionSTEEL.



SOLID® Knife

LionSteel made its first Solid knife back in 2010 and it's been the starting point for the Company revolution... When a new Solid knife comes to life it's always exciting and with the ROK a higher quality outcome has been reached. The frame comes out milling a single solid piece of titanium or aluminum, so the handle is a single strong element of the knife.



IKBS

The IKBS ball bearing system improves the knife opening and closing movements, and it guarantees a fast and smooth action (Flavio IKOMA and Rick Lala ideas).

ROK50

Limited Edition

*It was in 1969 when mankind landed on the moon
and in the same year LionSteel was founded.
Since then, we also took our step in the knife industry.
It's been fifty consecutive years of challenges that
lead to today's celebration of the ROK 50.
We used the best materials, released intense creativity
and a little bit of eccentricity to make our small giant leap.*

ROK50 Limited Edition



ROK
LIMITED EDITION
LIONSTEEL

OF AUTHENTICITY (50)

1969 edition, 50 pieces batch.
This is one of the fifty years of
LionSteel's history.

Year: 1969/50

LionSteel
Chad Nichols



ROK DAMASCO

The ROK high end version is built with a Solid Ti6Al4V titanium monolithic frame lock handle that is available in shiny blue or gold anodized variations. It features a Chad Nichols Scrambled Stainless steel blade and the machined clip is made with the same Damascus style. In the new smart and refined packaging there are included the NFC connector and the torx key ring with T6 and T8 tools. The knife features all the LionSteel technologies.

Design by Molletta



ROK DD BL



ROK DD GL



Blade length: 83 mm. – 3.27 in.
Blade thickness: 4,5 mm. – 0.18 in.
Total length: 198 mm. – 7.80 in.
Total weight: 163 gr. – 5.75 oz.
Frame: Ti6Al4V
Blade steel: Chad Nichols Scrambled Damascus
Scrambled Damascus
Packaging: Cardboard rigid box

ROK	ORANGE	RED	BLACK
SATIN BLADE	ROK A OS	ROK A RS	ROK A BS
BLACK BLADE	ROK A OB	ROK A RB	ROK A BB



THRILL DAMASCUS

SlipJoint knife, “no locks” mechanism, built from a single piece of material completely obtained by milling. SOLID LionSteel technology. The blade is made out of Chad Nichols “scrambled” Damascus Steel. The spring tip is reinforced with a treated stainless steel insert. This knife features the patented lionSTEEL HWAYL system that allows you to “hide” the clip inside the handle, so it can be used at owner’s discretion. The presence of the IKBS system allows a very smooth movement of the blade.

Design: Molletta



TL D GY



TL D BL



Total length: 180 mm. - 7.09 in.
Blade length: 80 mm. - 3.15 in.
Sharpening length: 75 mm. - 2.95 in.
Total thickness: 14 mm. - 0.55 in.
Blade thickness: 3.3 mm. - 0.13 in.
Total weight: 66 gr. - 2.33 oz.
Blade steel: Damascus
Locking system: Slipjoint
Frame: Titanium
Packaging: Cardboard box



TL BR

TL BL

TL GY

TITANIUM

Clip con sistema **H WAYL** CLIP
hide handle **ionSTEEL** SISTEM
toys steel

Total length: 180 mm. - 7.09 in.
Blade length: 80 mm. - 3.15 in.
Sharpening length: 75 mm. - 2.95 in.
Total thickness: 14 mm. - 0.55 in.
Blade thickness: 3.3 mm. - 0.13 in.
Total weight: 88 gr. - 3.10 oz.
Blade steel: M390 Bohler
steelBlade finish: Satin finished
Locking system: Slipjoint
Frame: Titanium 6Al4V
Packaging: Cardboard box

THRILL ALUMINUM

SlipJoint knife, “no locks” mechanism, built from a single piece of material completely obtained by milling. SOLID LionSteel technology.
The blade is made out of M390 stainless steel, satin finished. The spring tip is reinforced with a treated stainless steel insert.
This knife features the patented lionSTEEL HWAYL system that allows you to “hide” the clip inside the handle, so it can be used at owner’s discretion.
The presence of the IKBS system allows a very smooth movement of the blade.

Design: Molletta

ALUMINUM

Total length: 180 mm. - 7.09 in.
Blade length: 80 mm. - 3.15 in.
Sharpening length: 75 mm. - 2.95 in.
Total thickness: 14 mm. - 0.55 in.
Blade thickness: 3.3 mm. - 0.13 in.
Total weight: 66 gr. - 2.33 oz.
Blade steel: M390 Bohler
Blade finish: Satin finished
Locking system: Slipjoint
Frame: Aluminium
Packaging: Cardboard box



TL A BS

TL A RS

TL A GS

TL A OS



LEONE

LionSteel-Emerson ONE is new the Solid Karambit knife developed in collaboration with Emerson Design. The Solid frame-lock handle, already a distinctive characteristic for LionSteel, is milled out from a solid piece of Ergal aluminum available in black, red, green or Earth brown color, while the blade is made of CPM MagnaCut steel. The other embedded features make the knife more comfortable and secure to be used, allow the final user to choose how to use the knife.

REF (Removable flipper system): this feature permits to choose how to use the knife, if you don't want the flipper you can unscrew it using the torx tool and put the second "cap" screw that perfectly fits the hole in bottom of the blade. The patented Wave Feature. Ernest Emerson created the Emerson Wave Feature when he discovered that the knife would self deploy when being pulled from your pocket, given the right motion. This device allows you to open the knife literally, as it is removed from the pocket. This makes any Emerson Knife with the remote pocket opening system the fastest deploying knife in the world. Faster than an automatic, your knife is open as it comes up into your hand-ready for use.

Total length: 210 mm. - 8.27 in.
Blade length: 82 mm. - 3.23 in.
Blade thickness: 4 mm. - 0.157 in.
Total weight: 134 gr. - 4.73 oz.
Blade steel: CPM MagnaCut
Blade finish: StoneWash or Chemical Black
Locking system: Frame lock
Frame: Aluminum



L.E.ONE	BLACK	RED	GREEN	EARTH BROWN
STONE WASH	LE1 A BS	LE1 A RS	LE1 A GS	LE1 A ES
BLACK	LE1 A BB	LE1 A RB	LE1 A GB	LE1 A EB

SR Flipper TITANIUM



SR 22 mini

Lunghezza lama / Blade length: 80 mm. - 3,15 in.
Spessore lama / Blade thickness: 3,5 mm. - 0.13 in.
Lunghezza totale / Total length: 180 mm. - 7,08 in.
Peso totale / Total weight: 128 gr. - 4,51 oz.
Scocca / Frame: Titanium
Acciaio lama / Blade steel: SleiپnerImballo / Packaging: Leather sheath

The SR-11 represents the evolution of the historic SR-1 model, award winner at at Blade Show 2010.
The additional features are: flipper opening with ball-bearing system, two ball bearing with facilitate the opening and closing of the blade, and a window breaker in tungsten carbide.
Moreover, as its predecessor, the SR-11 features a Rotoblock system, which blocks the frame in the open position.
The frame is obtained from a unique piece, completely worked with 4-axis machining.
The frame point is made of steel, in order to avoid wear of the titanium frame body.
The clip is reversible, and can be mounted on both sides.

Design by Molletta



SR22 mini

SR11 original

SR11 B

Imballo: Fodero in pelle
Packaging: Leather sheath



	GREY	BRONZE
SR11	SR11 G	SR11 B
SR22 mini	SR22 G	SR22 B



SR Flipper ALUMINUM



SR 11 original aluminum

Lunghezza lama / Blade length: 94 mm. - 3.70 in.
Spessore lama / Blade thickness: 4.5 mm. - 0.18 in.
Lunghezza totale / Total length: 211 mm. - 8.31 in.
Peso totale / Total weight: 146 gr. - 5.15 oz.
Scocca / Frame: Alluminum
Acciaio lama / Blade steel: M390 5

The SR-11 represents the evolution of the historic SR-1 model, award winner at at Blade Show 2010.
The additional features are: flipper opening with ball-bearing system, two ball bearing with facilitate the opening and closing of the blade, and a window breaker in tungsten carbide.
Moreover, as its predecessor, the SR-11 features a Rotoblock system, which blocks the frame in the open position.
The frame is obtained from a unique piece, completely worked with 4-axis machining.
The frame point is made of steel, in order to avoid wear of the titanium frame body.
The clip is reversible, and can be mounted on both sides.

Design by Molletta



SR22 mini

SR11 original

SR11 BLACK



	ORANGE	RED	BLACK
SR 11 Satin	SR11A OS	SR11A RS	SR11A BS
SR 11 Black	SR11A OB	SR11A RB	SR11A BB
SR 22 mini Satin	SR22 A OS	SR22 A RS	SR22 A BS
SR 22 mini Black	SR22 A OB	SR22 A RB	SR22 A BB



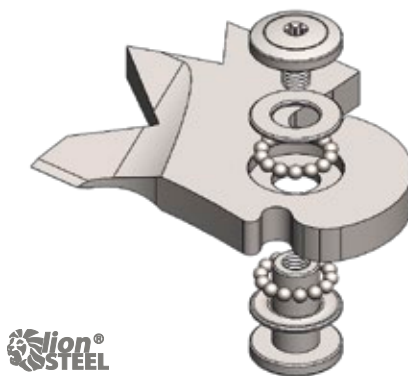
TM1 is fitted with a glass breaker and a tungsten carbide point Carbu di Tungsteno. To enhance the knife mechanism, it has been supplemented with the IKBS system which envisages ball bearings to facilitate the blade sliding motion.

TM1 è dotato di uno spacca vetri con punta in Carbu di Tungsteno. Per migliorare la meccanica del coltello è stato aggiunto il sistema IKBS che prevede dei cuscinetti a sfera che facilitano lo scorrimento della lama.

TM 1

Following the previous SOLID® SR1 and TiSpine models, both frame lock folding knives, we decided to launch a SOLID® back lock Knife. The task was a challenge, considering our decision to use Micarta and carbon fibre for the monolithic one-piece construction of the handle using four-centreline machining stations. The blade is available either satin finished or black. The clip can be fitted on either side of the handle, making this knife totally ambidextrous. The double spring lock back mechanism ensures greater flexibility in the mechanism and improved durability of the locking system.



Design by Molletta



TM1 CS

TM1 MB

Lunghezza lama / Blade length: 90 mm
 Spessore lama / Blade thickness: 4.5 mm
 Lunghezza totale / Overall: 205 mm
 Peso totale / Total weight: 100 gr
 Acciaio / Steel: Sleipner Uddeholm 61 HRC
 Manico/Handle: Solid® Micarta or Carbon Fiber
 Peso/Weight: 145 gr. Micarta, 144 gr. Carbon Fiber
 Rompi vetro / Glass breacher: Tungsten Carbide

	MICARTA	CARBON FIBER
	TM1 MS	TM1 CS
	TM1 MB	TM1 CB



myto DAMASCUS

Myto is the hi-tech EDC folding knife that fits perfectly your pocket and can be used for all everyday activities. Its geometry together with the elegant and minimal Molletta design perfectly match with its strength. Myto knives in Damascus variation feature a Chad Nichols' Raindrop steel blade equipped with the "ReF" (Removable Flipper system) and the Double Crown ball bearing system.

Myto folders have a titanium Solid clip screwed to the titanium frame by a tungsten carbide glass-breaker and the locking bar is reinforced with a hardened steel insert. The Damascus variation comes with double milled titanium handle and frame available in grey or anodized blue.

Design by Molletta



MT01 D GY



MT01 D BL



Total length: 201 mm. - 7.91 in.
Blade length: 83 mm. - 3.27 in.
Blade thickness: 4 mm. - 0.16 in.
Total weight: 118 gr. - 4.16 oz.
Blade steel: Damascus "Raindrop"
Locking system: Frame lock
Frame: Titanium 6Al4V



MT01 B BW

MT01 CF

The “Old Black” one features PVD coated then stonewashed parts: blade, handle and frame, spacer and clip. The flipper tab and the screws are heavy sandblasted. The Myto Carbon Fiber comes with grey titanium frame, spacer and clip, of course the handle is made out of a satin full carbon twill sheet.

The Myto cardboard box is entirely recyclable, all made in paper and built on two levels. The upper floor locks up the folding knife and the Warranty and Maintenance information sheet, the second level includes the “LionSteel Handy” Hex and Torx tool, the “cap screw” to be used when the flipper tab is removed and a flat screw for the clip that can replace the tungsten carbide tip.

myto TITANIUM

All Myto knives feature a satin finished M390 sintered steel blade equipped with the “ReF” (Removable Flipper system) and the Double Crown ball bearing system.

All Myto folders have a titanium Solid clip screwed to the titanium frame by a tungsten carbide glass-breaker and the locking bar is reinforced with a hardened steel insert. The Titanium variation comes with double milled titanium handle and frame and it is available in three colors: grey, blue and bronze.

Design by Molletta

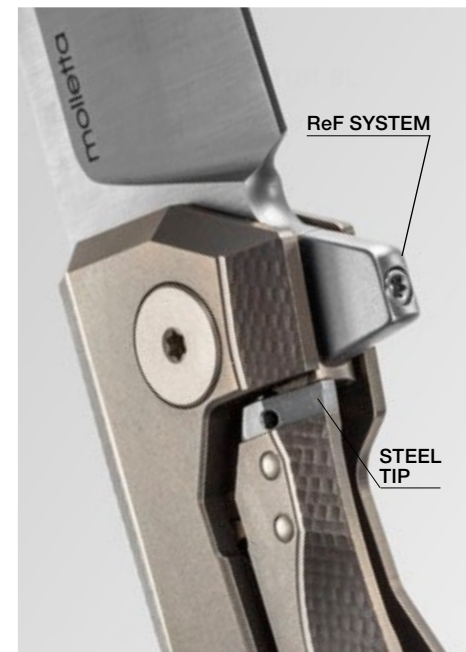
Blade steel: M390 Bohler
length: 82,5 mm - 3,25 in.
Blade thickness: 4,0 mm - 0,157 in.
Overall length: 200,8 mm - 7,90 in.
Frame: Titanium 6Al4V
Spacer & clip: Titanium
IKBS double
Stainless steel lock-bar tip
Weight:
Titanium 118 gr - 4,16 oz.
Handle: Titanium 6Al4V



MT01 GY

MT01 BR

MT01 BL

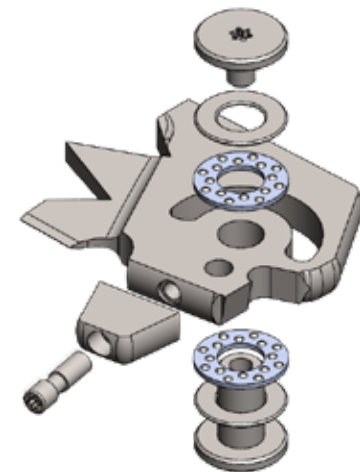


ReF SYSTEM

STEEL TIP



The “Double Crown” ball bearing system is an evolution of the standard mechanism. It improves the movement of the blade, it brings a faster and even smoother action and keeps the blade on its straight line.



The Myto Canvas knives have the same Titanium frame with Solid clip and M390 satin finished blade with ReF system, while the spacer is made out of black G10 and the Canvas micarta front scale is available in three variations: Natural, Green and Black. All Myto knives are supplied in a cardboard box which includes the LionSteel Handy Tool and spare screws. “Handy” is a new tool that features T6 and T8 Torx screw drivers on the sides, while the central hole is used as a driver for the clip screw on the back.

Design by Molletta



HANDY TOOL: HY 68

- Material: hardened AISI 420-C steel
- Screwdriver Torx T6
- Screwdriver Torx T8
- Hex driver (for hex-basa/tungsten carbide glassbreaker) 1/4"



MT01 CVN

MT01 CVB

MT01 CVG

Blade steel: M390 Bohler
length: 82,5 mm - 3,25 in.
Blade thickness: 4,0 mm - 0,157 in.
Overall length: 200,8 mm - 7,90 in.
Frame: Titanium 6Al4V
Spacer: Black G10
Clip: Titanium
Stainless steel lock-bar tip
Weight:
Carbon Fiber 105 gr - 3,70 oz.
Titanium 118 gr - 4,16 oz.
Canvas 96 gr - 3,38 oz.



The last born Myto family is the “Aluminum handle” one. These knives are very light and super fast in movement terms, available in four different anodized color variations. The blade is still made out of M390 steel and it’s available in stonewash or “old black” finishing, screws and clip finish follow the related blade style. The cardboard box is entirely recyclable, all made in paper. It includes “Warranty and Maintenance information sheet”, the “L shaped” Torx tool together with the “cap screw” to be used when the flipper tab is removed.

Design by Molletta



SOLID CLIP

The clip comes out a single piece of Titanium CNC milled. It is reversible, so it can be fixed on the opposite side for left hand users.



Stone Washed Blade

Old Black Blade

Total length: 200,8 mm. – 7.90 in.
Blade length: 82,5 mm. – 3.25 in.
Blade thickness: 4.0 mm. - 0.157 in.
Total weight: 96 gr. – 3.38 oz.
Blade steel: M390 sintered steel blade

MYTO ALUMINUM	BLACK	RED	GREEN	EARTH BROWN
Stone Washed Blade	MY01 A BS	MT01 A RS	MT01 A GS	MT01 A ES
Old Black Blade	MT01 A BB	MT01 A RB	MT01 A GB	MT01 A EB



T.R.E DAMASCUS

Folding knife with Titanium Fame Locksystem.
 This knife is equipped with a patented system that allows the user to carry the knife with or without the Flipper feature choosing thus to screw or remove it from the blade.
 The knife has a fully machined Titanium frame, pocket clip and spacer.
 The handle has two different versions: titanium or Carbon Fiber.
 It is provided with the IKBS ball-bearing pivot system to improve the knife opening and closing and give the T.R.E. knife an ultra-fast opening action.

Design by Molletta



TREDR FC RainDrop



TREDT FC Thor



TREDR GY RainDrop



TREDT GY Thor

- Blade steel: Thor, Damasteel
- Blade: RainDrop, Chad Nichols
- Blade length: 74 mm
- Blade thickness: 3.5 mm
- Overall length: 175 mm
- Frame: Titanium 6Al4V
- Spacer & clip: Titanium 6Al4V
- IKBS ball bearing
- Stainless steel lock-bar tip
- Weight: Carbon Fiber 62 gr, Titanium 74 gr
- Handle: Titanium or Carbon Fiber or Black G10
- T.R.E: LionSTEEL Patent pending



T.R.E

Folding knife with Titanium Fame Lock-system. This knife is equipped with a patented system that allows the user to carry the knife with or without the Flipper feature choosing thus to screw or remove it from the blade.

The knife has a fully machined Titanium frame, pocket clip and spacer.

The handle has two different versions: titanium or Carbon Fiber.

It is provided with the IKBS ball-bearing pivot system to improve the knife opening and closing and give the T.R.E. knife an ultra-fast opening action.

Design by Molletta

THREE RAPID EXCHANGE

- The user may choose three ways to equip his knfe:
- basic version without Flipper and pin on the blade
 - Thumb Stud version with the pin on the blade
 - with the flipper for a quick opening action.



TRE FC



TRE GY



TRE BL



TRE BR



Blade steel: M390 Bohler
 Blade length: 74 mm
 Blade thickness: 3.5 mm
 Overall length: 175 mm
 Frame: Titanium 6Al4V
 Spacer & clip: Titanium 6Al4V
 IKBS ball bearing
 Stainless steel lock-bar tip
 Weight: Carbon Fiber 62 gr, Titanium 74 gr
 Handle: Titanium or Carbon Fiber
 T.R.E: LionSTEEL Patent pending

T.R.E G10

Folding knife with titanium frame Lock-system. For this model the Flipper is a permanent and integral part of the blade and cannot be removed from it.

It comes with a 3D machined G10 handle and in four different colours: black, green, orange and pink.

The T.R.E. knife comes with Bohler M390 stainless steel blade.

Its spacer is in G10 black, while its frame and clips are in grey Titanium.

This model comes in a paper box packaging.

Design by Molletta



TRE GBK



TRE GGR



TRE GOR



TRE GPK



Blade steel: M390 Bohler
 Blade length: 74 mm
 Blade thickness: 3.5 mm
 Overall length: 175 mm
 Weight: 64 gr
 Frame: Titanium 6Al4V
 Handle: G10
 Spacer: Black G10
 Clip: Solid Titanium 6Al4V
 IKBS ball bearing
 Stainless steel lock-bar tip



KUR wood

Folding knife with stainless steel liner lock system.
The flipper is removable, it can be taken off unscrewing it from the blade using the torx tool.
Handle scales are made of 3D machined Olive or Santos wood and the blade is made out of Sleipner stainless steel.
All the KUR Wood knives have titanium back spacers and they come in a cardboard box with the tool and separate screw inside.

Design by Molletta



ReF (removable flipper)



KUR UL



KUR BST



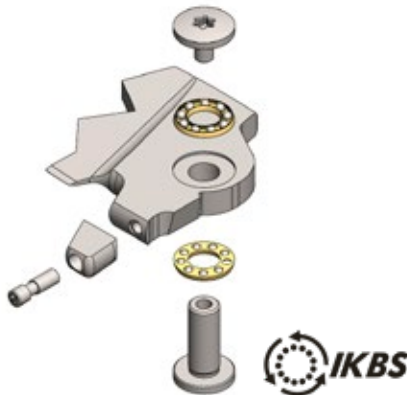
KUR WOOD	OLIVE HANDLE	SANTOS HANDLE
STONE WASH BLADE	KUR UL	KUR ST
OLD BLACK BLADE	KUR BUL	KUR BST

Overall length: 210 mm. - 8.27 in.
Blade: Sleipner by Uddeholm; 60-61hrc.
Blade length: 87 mm. - 3.43 in.
Blade thickness: 4.5 mm. - 0.18 in.
Net weight: 158 gr. - 5.57 oz.
Handle: Olive or Santos wood
Liners: Stainless Steel
Spacer: Titanium 6Al4V
Ball bearing: IKBS

KUR G10

Folding knife with stainless steel liner lock system.
The flipper is a permanent and integral part of the blade.
Handle scales are made of 3D machined G10 in different colors and the blade is made out of Sleipner stainless steel.
KUR G10 knives have titanium back spacers, steel wire pocket clip and they come in a cardboard package.

Design by Molletta



Overall length: 210 mm. - 8.27 in.
Blade: Sleipner by Uddeholm; 60-61hrc.
Blade length: 87 mm. - 3.43 in.
Blade thickness: 4.5 mm. - 0.18 in.
Net weight: 158 gr. - 5.57 oz.
Handle: G10
Liners: Stainless Steel
Spacer: Titanium 6Al4V
Ball bearing: IKBS

KUR BBR



KUR GR



KUR OR



KUR BK



KUR	BROWN	GREEN	ORANGE	BLACK
STONE WASH BLADE	-	KUR GR	KUR OR	KUR BK
OLD BLACK BLADE	KUR BBR	-	-	KUR BBK



TRADITIONAL KNIFE

“Non ci si deve accontentare di trasmettere ciò che si è ricevuto, ma fare le cose vecchie in modo nuovo: questa è innovazione”.

Joseph Alois Schumpeter

“We must not feel satisfied when transmitting what was received, but we have to make old things in a new way: this is innovation”.



JACK

JACK

Jack is the new modernized traditional folding knife made by LionSteel. It is the perfect pocket knife, a classic style Every Day Carry developed in a modern way with innovative technology and high quality materials.

Jack features an M390 sintered steel Clip blade in its first variation, then you can have also the screw driver / cap lifter stainless steel blade and in the third variation there's even the spiral corkscrew. It is equipped with titanium bolsters and liners, while the scales can be made of olive wood, santos wood, green canvas, black G10 or carbon fiber.

Jack is supplied in a cardboard-box packaging and there will be a leather sheath with clip as an additional accessory.

Carbon Fiber

Santos Wood

Black G10

Green Canvas

Olive Wood

ONE USE

- BLADE

TWO USES

- BLADE
- SCREWDRIVER

THREE USES

- BLADE
- CORKSCREW
- SCREWDRIVER



Technical info:
1 Use Weight: 53 gr - 1,57 oz.
2 Uses Weight: 67 gr - 2,36 oz.
3 Uses Weight: 79 gr - 2,79 oz.
Blade length: 77 mm. – 3,03 in.
Sharpening length: 74 mm - 2,91 in.
Overall: 175 mm - 6,88 in.
Blades steel: M390 stainless
Blade thickness: 2,5 mm. – 0.1 in.
Screw driver blade; 420C



BLADE	OLIVE	SANTOS	G 10 BLACK	GREEN	CARBON FIBER
1 use	JK1 UL	JK1 ST	JK1 GBK	JK1 CVG	JK1 CF
2 uses	JK2 UL	JK2 ST	JK2 GBK	JK2 CVG	JK2 CF
3 uses	JK3 UL	JK3 ST	JK3 GBK	JK3 CVG	JK3 CF

bestMAN TWO BLADES



BM13 CF - Carbon Fiber

BM13 UL- Olive Wood

BM13 CVN - Natural Canvas

BM13 EB - Ebony Wood

BM13 ST - Santos Wood

Blade type: TWO BLADES

Clip blade length: 71 mm. – 2.80 in.
Wharncliffe blade length: 65,2 mm. – 2.57 in.
Blades thickness: 2,5 mm. – 0.1 in.
Blades steel: M390 stainless
Total length: 237,5 mm. – 9.35 in
Total weight: 93 gr. – 3.28 oz
Lock system: Slipjoint.

bestMAN ONE BLADE



Blade type: ONE BLADE

Clip blade length: 71 mm. – 2.80 in.
Wharncliffe blade length: 65,2 mm. – 2.57 in.
Blades thickness: 2,5 mm. – 0.1 in.
Blades steel: M390 stainless
Total length: 170 mm. – 6.7 in.
Total weight: 68 gr. – 2.40 oz.
Lock system: Slipjoint.

CLIP - line



BM1 - Carbon Fiber



BM1 - Santos Wood



BM2 - Ebony Wood



BM2 - Natural Canvas



BM2 - Olive Wood

DROP - line

BLADE	OLIVE	CARBON FIBER	SANTOS	NATURAL CANVAS	EBONY
CLIP	BM1 UL	BM1 CF	BM1 ST	BM1 CVN	BM1 EB
DROP	BM2 UL	BM2 CF	BM2 ST	BM2 CVN	BM2 EB



GT01 UL

GT01 ST

Aisi 420 stainless steel clip, bolsters and liners are made of titanium with a special rounded milling to improve sensitivity in the handle.



gitano

"My idea behind the Gitano was to make a folding knife that is based on old south european folding knives in a new style. What I like about these knives is its elegant lines and often large blades in relation to the handles".
Gudy van Poppel

LionSteel loved Gudy's idea and decided to start this new collaboration with him and Tools For Gents that helped us to develop the final versions. Gitano is an E.D.C. (Every Day Carry) folding knife that joined the "Tradition by LionSteel" collection.

Design Gudy van Poppel and TFG collaboration



GT01 GBK



GT01 CF



GT01 CVG



Total length: 192 mm. - 7.56 in.
Blade length: 85 mm. - 3.35 in.
Sharpening length: 81 mm. - 3.19 in.
Closed length: 108 mm. - 4.25 in.
Total thickness: 12 mm. - 0.47 in.
Blade thickness: 3 mm. - 0.12 in.
Total weight: 91 gr. - 3.21 oz.

OPERA

La serie del modello Opera viene arricchita con la versione lama in Damasco inox Scrambled. È disponibile con manico in Ulivo, Montone, Cervo ed in Madreperla Australiana ed Abalone.

Opera's series will be enriched by a new version made on Damascus Inox Heinskingringla. It will be available in Olive wood, Ram Horn, Stag and Australian Mother of Pearl with Abalone.



8800D MOP



8800D MN



8800D CE

Max
DESIGN

OPERA

Lunghezza lama / blade length: 74 mm
Lunghezza totale / total length: 177 mm

	MOTHER OF PEARL & ABALONE	RAM HORN	STAG	OLIVE WOOD
	8800D MOP	8800D MN	8800D CE	8800D UL

OPERA & BIG

Durante gli ultimi mesi del 2006 abbiamo iniziato a collaborare con Max, volevamo arricchire il nostro catalogo con alcune linee tipicamente Italiane firmate da uno dei più prestigiosi artigiani nazionali. Sono nati così OPERA e SKINNER. La lama è in D2 con arrotatura filo rasoio e finitura satinata.

In the last few months of 2006 we started working with Max, we wished to extend our catalogue with some typically Italian lines designed by one of the most prestigious Italian artisans. Thus, OPERA and SKINNER were created. The blade is in D2 with razor edge sharpening and satin finish.



Max
DESIGN



STAG



SANTOS WOOD



BLACK

OPERA

Lunghezza lama / blade length: 74 mm
Lunghezza totale / total length: 177 mm

BIG OPERA

Lunghezza lama / blade length: 90 mm
Lunghezza totale / total length: 210 mm
D-2: C 1.5-1.6 / Cr 11-12 / Mn 0.35
/ Si 0.3 / Mo 0.75 / V 1


	STAG	SANTOS WOOD	OLIVE WOOD	BLACK
OPERA	8800 CE	8800 ST	8800 UL	8800 BK
BIG OPERA	8810 CE	8810 ST	8810 UL	8810 BK

MINI DAMASCUS



Scrambled damascus stainless steel



	RAM HORN	OLIVE WOOD	SANTOS WOOD
 Lama/blade 60 mm Totale/overall 145 mm	8210D MN	8210D UL	8210D ST

MINI

Anche per il 2008 si rinnova la collaborazione con MAX, una delle più prestigiose firme dell'artigianato italiano. Nasce così la nuova linea MINI. È disponibile con mostrine in Titanio o in versione manico integrale. La lama è in D2.

Also this 2008 the collaboration with MAX is renewed, one of the most prestigious names in handmade italian products. The new line MINI is born. It is available with Titanium bolster or full handle. The blade is D2.

8200 ST



8210 UL



Max
DESIGN

	SANTOS WOOD		OLIVE WOOD	
WITHOUT BOLSTER	8210 ST	Lama / blade 60 mm Totale / overall 145 mm	8210 UL	Lama / blade 60 mm Totale / overall 145 mm
WITH BOLSTER	8200 ST	Lama / blade 60 mm Totale / overall 145 mm	8200 UL	Lama / blade 60 mm Totale / overall 145 mm



FIXED BLADE KNIFE

“Una persona ben addestrata ha bisogno solo di un coltello per sopravvivere”.

Anonimo

“A well trained person needs only a knife to survive”.

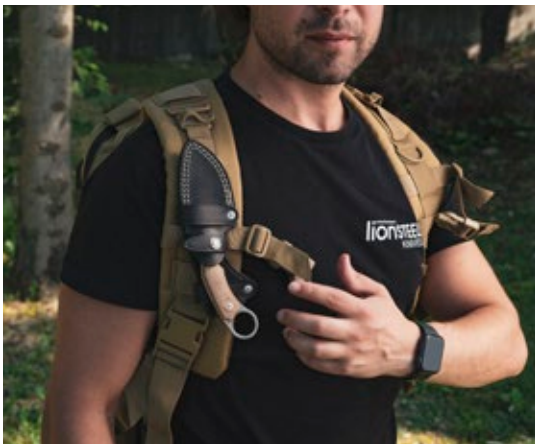
H1 SKINNER BLADE



H1 CVN - Natural Canvas

H1 GBK - G10 Black

H1 CVG - Green Canvas



H2 DROP BLADE

The new H1 and H2 knives, designed by Tommaso Rumici in collaboration with Coltelleria Scintilla, reconsider the karambit as an utility tool, keeping the typical extraction/handling ease and speed of the classic one matching up with blade styles more versatile than the classic hook blade.

The H1 and H2 are perfect tools to carry during hiking tours and hunting, even for military purpose as back-up knives, easy to carry on every kind of busy backpack.

The designated sheath allows whether vertical or horizontal carry for both knives, also on M.O.L.L.E. systems, in various positions and solutions.



H2 GBK - G10 Black



H2 CVG - Green Canvas



H2 CVN - Natural Canvas



Total length: 184 mm. - 7.24 in.
 Blade length: 75 mm. - 2.95 in.
 Blade thickness: 3.8 mm. - 0.15 in.
 Total weight: 102 gr. - 3.60 oz.
 Blade steel: M390 sintered steel
 Blade finish: Stone washed
 Handle material: Green Canvas
 Sheath: Leather
 Packaging: Cardboard box



Total length: 295 mm. - 11.6 in.
Blade length: 147,5 mm. - 5.8 in.
Blade thickness: 5,5 mm. - 0.21 in.
Total weight: 370 gr. – 13.05 oz.
Blade steel: K-490 sintered
Blade finish: Satin or Old-Black
Handle: Canvas Natural, Green or Black
Holster: Kydex



T6



T6 is the last born in the fixed blade family, it stays in between the M7 and the T5 in terms of dimensions, It is the right companion in any tactical and camp situation, perfect for evry outdoor situation. It features a strong K-490 steel blade and it is equipped with a SOLID® handle, milled out of a Canvas micarta block, which ensure a firm and safe grip. Deisgned by Molletta, T6 has an aggressive profile and is therefore particularly recommen- ded when there is need for a robust, safe, and easy to handle tactical instrument. Supplied with its Kydex holster provided of reversible Cordura structure with M.o.l.l.e. system for safe and easy carrying, T6 is availa- ble with satin-finished or “Old Black” treated blade.



T6 CVB - Black Canvas

T6B CVG - Green Canvas

T6 CVN - Natural canvas

T6	NATURAL CANVAS	GREEN CANVAS	BLACK CANVAS
Satin Blade	T6 CVN	T6 CVG	T6 CVB
Old Black Blade	T6B CVN	T6B CVG	T6B CVB



T5 CVG

T5B CVG

Total length: 252 mm. - 9.92 in.
Blade length: 128 mm. - 5.04 in.
Blade thickness: 5 mm. - 0.20 in.
Net weight: 274 gr. - 9.67 oz.
Handle: Micarta
Blade steel: Niolox

provided with black leather
sheath featuring Molle system



T5 is the "tactical fixed blade" of the family, it features a Niolox stainless steel blade, which is available either satin finished or PVD coated then stonewashed. As it happens for its bigger brother M7, The SOLID® knife handle is obtained from a 4D machined Micarta block, this procedure makes the grip stronger and safe. The T5 is designed by Molletta and it is dedicated to the users who like outdoor activities and the tactical world.

Design by Molletta



T5B MI

T5 MI

M7 CANVAS



Total length: 315 mm. - 12.40 in.
Blade length: 180 mm. - 7.09 in.
Blade thickness: 5.5 mm. - 0.22 in.
Total weight: 407 gr. - 14.36 oz.
Blade finish: Satin finished or Black coated
Sheath: Cordura + Kydex - MOLLE System

The M7 is supplied with a Kydex sheath with a Cordura lining, and a belt loop joined using the MOLLE system for a firm and easy wearability.

M7

The biggest of lionSTEEL outdoor knives. Its large dimensions and extreme handiness allow a strong resistance to the most dissimilar camp uses, including chopping and batoning. It is a knife with a Micarta handle made with SOLID® knife technology.

The M7 is equipped with a Sleipner stainless steel blade, which is available either satin finished or black coated. This kind of blade offers a special resistance to usage and an easy sharpening. The SOLID® knife handle, obtained from a 4D machined Micarta block, makes the grip strong and safe, and guarantees the greatest strength at the same time.

The M7 was designed by Molletta to answer the need to cut out tree branches during a challenging excursion, and, for this reason, the weight is mostly distributed on the blade. The M7 dimensions, weight and handiness make it the ideal companion for every outdoor activity.



M7 MS



M7 MB

M5 CVN - Black Canvas

M5 CVN - Natural Canvas

Total length: 241 mm. - 9.49 in.
 Blade length: 115 mm. - 4.53 in.
 Blade thickness: 4.5 mm. - 0.18 in.
 Total weight: 350 gr. - 12.35 oz.
 Blade steel: Sleipner 60-61 HRC
 Blade finish: Satin finished or Stone washed
 Sheath: Leather (wooden versions) or Cordura (G10 versions)

The M5 is designed by Molletta and it is supplied with a leather sheath for the wooden models, and with a Cordura sheath for the G10 models.

The M5 is a fixed blade knife, born to be very easy to wear while still being very reliable for every outdoor and camp usage because of its large blade.

The M5 is equipped with a Sleipner stainless steel blade, which is available either satin finished or stone washed, and it is manufactured with three different handles: olive wood, Santos wood and black G10. The handle is fixed with stainless steel Torx T8 screws.

The M5 is suitable for a variety of camp usages, cutting branches or processing food for instance. Its average dimensions and reduced weight make this knife an excellent all-around tool that is ideal in every outdoor activity.

The M5 is designed by Molletta and it is supplied with a leather sheath for the wooden models, and with a Cordura sheath for the G10 models.



M5 UL - Olive Wood

M5 ST - Santos Wood

M5 G10

M5B G10

Total length: 241 mm. - 9.49 in.
 Blade length: 115 mm. - 4.53 in.
 Blade thickness: 4.5 mm. - 0.18 in.
 Total weight: 350 gr. - 12.35 oz.
 Blade steel: Sleipner 60-61 HRC
 Blade finish: Satin finished or Stone washed
 Sheath: Leather (wooden versions) or Cordura (G10 versions)



M4

The M4 is a fixed blade knife, suitable for every camp usage and especially useful for mountain hikes. The M4 limited dimensions make it easy to wear without penalizing its bushcraft knife features.

The M4 is equipped with a M390 sintered steel blade, which guarantees a high stainlessness and a long endurance sharpening. The blade is available with a satin finish while the handle is provided in six versions: Olive Wood, Santos Wood, Walnut Wood and Black G10, Natural Canvas and Green Canvas.

Designed by Molletta, the M4 has a handle with a unique ergonomics, that allows to hold the knife in both ways, that is to say, with the thumb towards the blade or towards the end of the handle.



The M4 is supplied with a double seam leather sheath.



M4 G10



M4 WN - Walnut Wood



M4 ST - Santos Wood



M4 UL - Olive Wood

Total length: 205 mm. - 8.07 in.
Blade length: 95 mm. - 3.74 in.
Blade thickness: 4 mm. - 0.16 in.
Total weight: 145 gr. - 5.11 oz.
Blade steel: M390 59-61 HRC
Blade finish: Satin finished
Sheath: Leather with double seam



M3 CVG - Green Canvas

M3 UL - Olive Wood

M3 CVN - Natural Canvas

All Canvas versions are supplied with a leather sheath

M3

The M3 is a fixed blade knife, easy to wear because of its reduced dimensions, and still reliable for every camp usage.

The M3 is equipped with a satin finished Niolox stainless steel blade. The scales can be disassembled and are available in olive wood, Santos wood and Micarta.

The M3 is provided with a 3D machined handle, thus processed to obtain the best ergonomics. The surface texture allows a very firm grip. The handle is fixed with stainless steel Torx T8 screws.

The M3 is supplied with a leather sheath for the wooden and Canvas versions, and a Cordura sheath for the Black Micarta version.



M3 UL - Olive Wood



M3 ST - Santos Wood



M3 MI - Micarta



Total length: 235 mm. - 9.25 in.
Blade length: 105 mm. - 4.13 in.
Blade thickness: 5 mm. - 0.20 in.
Total weight: 230 gr. - 8.11 oz.
Blade steel: Niolox
Blade finish: Satin finished
Sheath: Leather



M2M ST - Santos Wood

M2M UL - Olive Wood

M2M

M2M is the evolution of the older brother M2, it features a longer handle in order to have a better grip when using the knife throughout different works. At the same time the handle scales have been 3D milled in order to have a more ergonomic shape the blade is built out of M390 sintered steel and satin finished. The leather sheath is stronger and more flexible, it has been improved with a double seam and adding two removable leather straps with screws. In this way the designated holster allows whether vertical or horizontal carry, also on M.O.L.L.E. systems, in various positions and solutions.



M2M GBK - - Black G10

M2M CVN - Natural Canvas

M2M CVG - Green Canvas

Blade: M390 steel, satin finished
 Blade length: 90 mm
 Total length: 203 mm
 Blade thickness: 4 mm
 Handle materials: Natural and Green Canvas, Black G10, Santos and Olive wood
 Weight: Black G10: gr 168, Green and Natural Canvas: gr 154, Santos and Olive wood: gr 140



The sharp cornered extended tang can be scraped against the fire striker steel rod, so that it generates the sparks needed to light the fire. For the final user it is safer to proceed in this way, since the knife can be held when inside the sheath, so there's no risk to slip to the edge of the blade.



Total length: 170 mm. - 6.69 in.
 Blade length: 74 mm. - 2.91 in.
 Blade thickness: 3.2 mm. - 0.13 in.
 Total weight: 75 gr. - 2.65 oz.
 Blade steel: M390 59-61 HRC
 Blade finish: Satin finished
 Sheath: Leather

M1

The M1 is a bushcraft fixed blade knife. It is a very precious excursion mate without being cumbersome, due to its limited dimensions.

The M1 is equipped with a satin finished M390 sintered steel blade, which guarantees high stainlessness and a long-endurance sharpening. The handle is available in five versions: olive wood, walnut wood, Santos wood, black G10 and orange G10.

The M1 features a lanyard to which a small titanium pearl is attached by a screw system. This application allows an easier extraction of the knife from its sheath.

The M1 is supplied with a leather sheath for all the different handle versions.



M1 UL - Olive Wood



M1 WN - Walnut Wood



M1 ST - Santos Wood



M1 GBK - Black G10



M1 - GOR - Orange G10



B41 ST - Santos Wood

B41 UL - Olive Wood



The sharp-cornered extended tang can be scraped against the fire striker steel rod, so that it generates the sparks needed to light the fire. For the final user it is safer to proceed in this way, since the knife can be held when inside the sheath, so there's no risk to slip to the edge of the blade.

B41

LionSteel range of fixed blade knives is enriched with the new born "B41" Bushcraft knife. The B41 is the B40 "twin brother". It is the tool for the natural life enthusiasts, great for wood carving thanks to the stone-washed Sleipner stainless steel blade and fire-crafting using the back flat tang. It's easy to be handled because of its light weight and average dimensions. The 3D milled grip is even more comfortable and ergonomic now. There are the same traditional variation with Olive or Santos wood handle and then there's the technical one with G-10 and Micarta handle as it happens for the B40. It comes in the LionSteel brown leather sheath, with belt.

Design by Molletta



B41 GBK - Black G10

B41 CVG - Green Canvas

B41 GOR - Orange G10



Blade length: 98 mm. – 3.86 in.
Blade thickness: 3,8 mm. – 0.15 in.
Total length: 223 mm. – 8.78 in.
Total weight: 186 gr. – 6,56 oz.
Handle: olive or Santos wood, G10, Micarta
Blade steel: Sleipner stainless
Sheath: Brown leather



B40 ST - Santos Wood

B40 UL - Olive Wood



The sharp-cornered extended tang can be scraped against the fire striker steel rod, so that it generates the sparks needed to light the fire. For the final user it is safer to proceed in this way, since the knife can be held when inside the sheath, so there's no risk to slip to the edge of the blade.

B40

LionSteel range of fixed blade knives is finally enriched with the new born "B40" Bushcraft knife. The B40 is the ultimate tool for the natural life enthusiasts, great for wood carving thanks to the stone-washed Sleiþner stainless steel blade and fire-crafting using the back flat tang. It's easy to be handled because of its light weight and average dimensions, it's very comfortable for its 3D milled grip. There's a more traditional variation with Olive or Santos wood handle and then there's the technical one with G-10 and Micarta handle. It comes with a brown leather sheath perfectly shaped for its profile.

Design by Molletta



B40 GOR - Orange G10



B40 CV G - Green Canvas



B40 GBK - Black G10

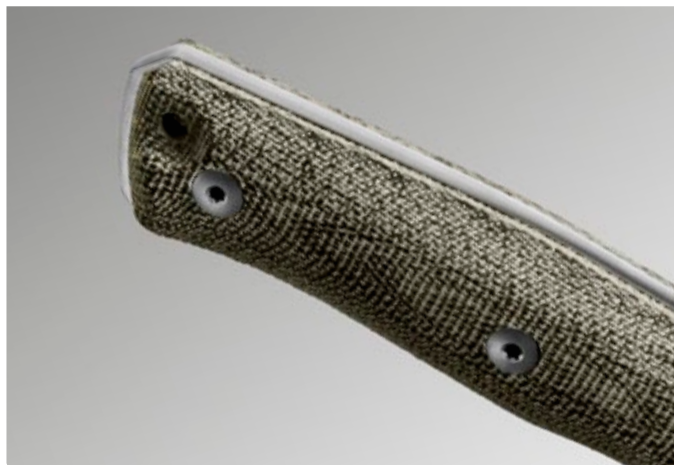


Blade length: 98 mm. – 3.86 in.
Blade thickness: 3,8 mm. – 0.15 in.
Total length: 223 mm. – 8.78 in.
Total weight: 208 gr. – 7.34 oz.
Handle: olive or Santos wood, G10, Micarta
Blade steel: Sleiþner stainless
Sheath: Brown leather



B35 - CVG Green Canvas

B35 - GBK Black G10



LionSteel range of fixed blade knives is finally enriched with the new born “B35” Bushcraft knife. The B35 is the ultimate tool for the natural life enthusiasts, great for wood carving thanks to the stone-washed Sleipner stainless steel blade and fire-crafting using the back flat tang

B35

The B35 is a fixed blade knife, suitable for every camp usage and especially useful for mountain hikes. The B35 limited dimensions make it easy to wear without penalizing its bushcraft knife features.

The B35 is equipped with a Sleipner steel blade, which guarantees a high endurance sharpening. The blade is available with a satin finish while the handle is provided in five versions: olive wood, Santos wood, walnut wood, black G10 and green Canvas.

Design by Molletta



B35 WN - Walnut wood



B35 ST - Santos Wood



B35 UL - Olive Wood



Total length: 203 mm. - 7.99 in.
Blade length: 90 mm. - 3.54 in.
Blade steel: Sleipner stainless steel,
Blade finish: Satin finished
Sharpening length: 87 mm. - 3.43 in.
Total thickness: 17 mm. - 0.67 in.
Blade thickness: 3.7 mm. - 0.15 in.
Total weight: 118 gr. - 4.16 oz.
Handle material: Walnut
Sheath: Leather with double seam



STEAK KNIFE

Steak knife è nato dopo molteplici richieste di cacciatori e appassionati del coltello. Ci chiedevano un coltello non solo da lavoro, da utilizzare durante le fasi della caccia, ma qualcosa di bello da poter usare e mostrare agli amici durante le cene di fine battuta. Il manico è monolitico disponibile in legno di Ulivo.

Steak knife was created after receiving many requests from hunters and knife-lovers. They asked for a knife which could be used not only as working tool for hunting, but also to be shown to friends as a nice object during after-hunting dinners. The handle is monolithic and is available in Olive wood.

Manico / Handle: Ulivo / Olivewood
Lunghezza Totale / Overall Length: 210 mm - 8,27 in
Lunghezza Lama / Blade Length: 105 mm - 4,13 in
Spessore Lama / Blade Thickness: 2,2 mm - 0,09 in
Acciaio Lama / Blade Steel: W.1.4116
Imballo / Packaging: Scatola in Legno / Wood Box



9001 UL



9001S UL

OLIVE WOOD		OLIVE WOOD	
	9001 UL Lama / Blade 105 mm Totale / Overall 210 mm		9001S UL 4 Pezzi / 4 Pieces Lama / Blade 105 mm Totale / Overall 210 mm



ACCESSORY COLLECTION

La forza di un design innovativo e l'applicazione di nuove e sofisticate tecnologie, consentono oggi a LionSteel di andare oltre i confini dei propri prodotti classici: per dare vita a oggetti e accessori che raccontano uno stile, una visione imprenditoriale e la passione per le sfide creative.

The strength of an innovative design and the application of new and sophisticated technologies, today allow LionSteel to go beyond the boundaries of its classic products: to give life to objects and accessories that tell a style, an entrepreneurial vision and the passion for creative challenges.



Eggie is a fine designed keychain made out of Titanium and at the same time a suitable and reliable multitool. It is fully fitted with different stainless steel bits helpful in all the situations, it includes: torx drivers in four sizes, the slot screwdriver, a tungsten carbide tip and a little straight blade. The central socket is equipped with a magnet and it is hex shaped so the tool stays stable when on duty.

Eggie can be fastened thanks to the titanium carabiner and it is available in grey, blue and bronze.



"Audacious Concept Design"



Specifiche tecniche / Technical specifications

total length: 49 mm. – 1.93 in.
diameter: 24.4 mm. – 0.96 in.
weight: 69 grams – 2.43 oz.
Structure: Titanium
bits: A-420 steel

BITS:

T8
T6
T10
Flat Head
Blade
Tungsten Carbide Tip



Nyala
pen

Nyala è la penna creata da LionSteel.
Il corpo è internamente in titanio. Gli inserti
sono disponibili in damasco Super Dense Twist
(di Damasteel) oppure in fibra di carbonio.
Questa penna è caratterizzata da una
meccanica "twist pen", e la ricarica interna
è prodotta da Fisher. Space Pen. PR4.
Colori disponibili: grigio lucido, blu
lucido, bronzo lucido, blu opaco.

*Nyala is the pen made by LionSteel.
The body is entirely made of titanium.
The insert is available either in
Super Dense Twist damascus (by
Damasteel) or in carbon fiber.
This pen features a twist pen
mechanic, and the space refill is
made by Fisher, Space Pen PR4.
Available colours: grey shine, blue
shine, bronze shine, blue matte.*

Specifiche tecniche / Technical specifications

Peso netto CF/ Net weight CF: 25 gr. - 0.88 oz.
Peso netto D / Net weight D: 31 gr. - 1,09 oz.
Imballo / packaging: scatola di legno / wooden box
Struttura / Structure: Titanio / Titanium
Lunghezza / Length: 117 mm
Diametro / Diameter: 10 mm
Cartuccia / Refill: Space Pen PR4

RUMICI
Design



CARBON FIBER



NY FC BLS



NY FC BRS



NY FC GYS



NY FC BLM

DAMASCUS



NY SDT BRS



NY SDT GYS



PR4 REFILL

SPACE PEN CARTUCCIA

Fisher Space Pen Co. has been providing pens & ink cartridges for the Space Program for over 45 years, with pens flown on every manned space flight and in use, every day, aboard the International Space Station. Based on technology developed by Paul C. Fisher in 1966, The Fisher Space Pen is designed to perform reliably anywhere and everywhere. The sealed pressurized ink cartridge inside this pen will allow it to write in extreme temperatures (-34 degrees Celsius to 121 degrees Celsius), under water, over grease, at any angle, even upside down! "Goes Anywhere, Writes Everywhere"™



TWIST
movement



LionBeat is a small accessory belonging to the SolidKnife™ family: the handle is a unique piece of natural material, to which the blade is attached. It's an all-around object: it can be used as a keychain, as a pendant for a necklace (weight is just 14 gr, 0.49 oz!), and as an accessory for a purse. Small, lightweight and stylish, it's the essential accessory of the Lionsteel family. Besides, it's a real knife which, thanks to its lightness and to the AISI 440 stainless steel blade, is ideal for a variety of different tasks.

ZANDA DESIGN



LB UL - olive wood handle



LB CO - horn handle

LB EB - ebony handle

LB ST - santos wood handle

Overall length: 42 mm. - 1.65 in.
Blade length: 30 mm. - 1.18 in.
Net weight: 80 gr. - 2.82 oz.
Handle: Olivewood - Santos - Ebony - Horn
Blade steel: AISI 440

ESKAPER

303 Stainless steel key ring with tungsten carbide tip. Useful security tool to easily break the glass in case of need. It also features a handy bottle opener.

MULTIFUNCTION:

- Bottle Opener
- Keychain
- Glass breaker
- Emergency self defence
- Kubotan



Eskaper

Tungsten carbide tip



Overall length: 10,6 cm - 4.17 in.
Net weight: 45 gr. - 1.59 oz.
Steel: 30w3
Packaging: Paper box
With Tungsten carbide

• Bottle Opener



• Glass breaker



ACORN DICE

AcornDice begins its life as a good luck charm and a symbol of magic. In many ancient cultures, the oak apparently was cosmic tree, which represented the bond between the divine world and the mortal world, so the oak fruit has always been associated to life and eternity. It is told that giving acorns, real or in valuable materials, as gifts is a symbol of luck and fertility. Acorns can be used as lucky charms or talismans: they make dating easier and, if in pairs, preserve marriages from crisis.

DD IN - Acorn Dice - Steel



DD OT - Acorn Dice - Brass



Variante / Variant: Brass - Steel
Lunghezza totale / Overall length: 3,5 cm. - 1.38 in.
Peso netto / Net weight: 29 gr. - 1.02 oz.
Acciaio / Steel: AISI 440
Corpo in acciaio inossidabile monolitico 303 /
Monolithic 303 stainless steel body

TIP

Perlina in Titanio con relativa vite di chiusura. La vite di chiusura schiaccia il cordino bloccandolo all'interno della perlina. La perlina ed il sistema di bloccaggio è studiato per cordino da 5/32 4 mm. La perlina ha dimensioni di 12 mm di larghezza e di 15 di lunghezza.

Small Titanium pearl with its closing screw.
The closing screw pushes the thin cord locking it to the interior of the pearl.
The pearl and the locking system are studied for a 5/32 lanyard, of around 4 mm.

Variante / Variant: grigio / blu / bronzo
Peso netto / Net weight: 6 gr./ 0,21 oz.
Scocca / Frame: Titanio / Titanium B 6 A/4V

TIP BR - Bronze



TIP BL - Blue



TIP GY - Grey



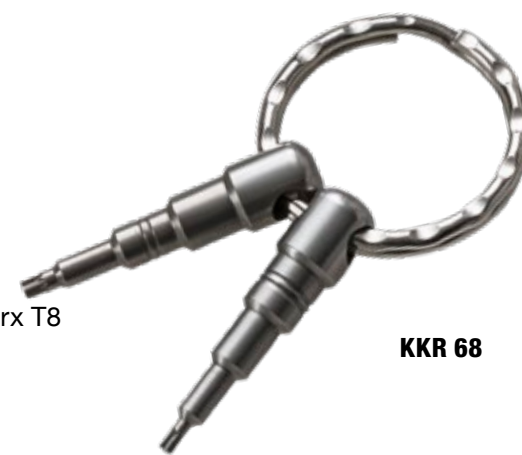
KKR 68

Key Ring with heat treated Aisi 420 stainless steel Torx screwdrivers, in two different sizes: T6 and T8. Easy to use when in need of remove (or add) either the flipper tab or the thumb-stud when possible, useful to adjust the pivot screw or the handle screws.

Torx T8

Torx T6

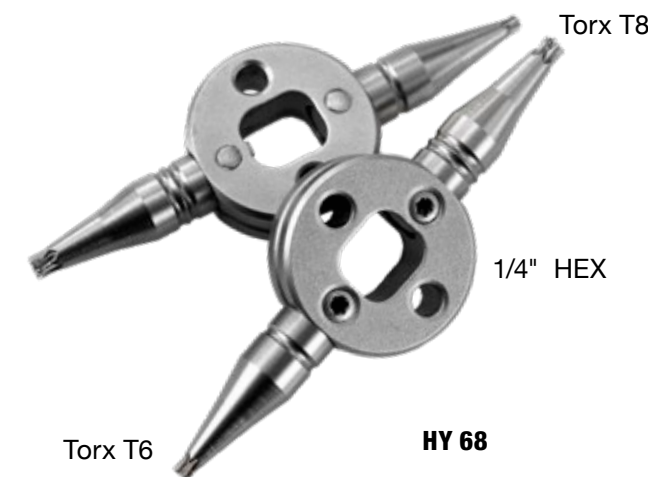
KKR 68



HANDY

HY 68 HANDY TOOL

- Material: hardened AISI 420-C steel
- Screwdriver Torx T6
- Screwdriver Torx T8
- Hex driver (for hex-basa/tungsten carbide glassbreaker) 1/4"



Torx T6

Torx T8

1/4" HEX

HY 68





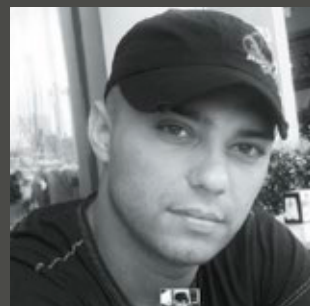
MOLLETTA

Michele Pensato - aka 'molletta', his nickname in Italian – is a very active designer with years of experience. His previous life as an excursion lover and a passion for archaeology had him spending most of his experiences in the great outdoors, where he soon got to understand how a great knife should really be and what it should be capable of achieving.



RUMICI

Tommaso Rumici is an Italian designer who has been working the cutlery world since 2006, when he introduced his first industrial-level project. By taking particular care to functionality and respect of the anatomy of the hand, Tommaso creates object for practical use, with well defined lines. Tommaso's strength is his passion, which pushes him to constantly widen his technical skills, by studying design, mechanics, materials, treatments and everything is need to work better. Besides being a designer, Tommaso Rumici cooperates with weapon and knife magazines, both Italian and international, by reviewing and taking photos of the products.



ZANDA

Costantino Zanda lives in Sardegna (Sardinia), more precisely in Arbus. He got to the 'knife world' when he was 16 years old, learning this art from Francesco Pusceddu. Unfortunately, Francesco died so he decided to begin working on his own, focusing on artisan works linked to Sardegna tradition, as it is tradition which keeps identity alive. Among all the creations, a very important one is 'su Coru' (the heart), which name derives from the particular and elegant shape of this knife.



MAX

Massimo Salice Sanna: after starting making knives in 1993 as a hobby, soon his passion became a real job and day-to-day activity. Well known for his accurate touch and the eye for details, he is considered one of the first kn s noticed and therefore chosen by LionSteel for his precision and attention to design and mechanical features of the knives he makes. The Opera model was born in 2006, followed by other product families Daghetta, Mini and Skinner.



GUDY VON PUPPEL

Gudy van Poppel is a fulltime Dutch Bladesmith well known for his work in both Europe and the United States. He started as a genuine Blacksmith and has been making blades for several decades now. He learned to forge his own damascus steel mid 90's. He started with making/ hand forging mainly fixed blades and later on, swords. His craftsmanship is undisputed and his reputation in the inside knife community and among colleagues is increasing rather fast!



RUSLAN SARYCHEV

knife and gear enthusiast from Finland, founder of Audacious Concept. His passion for knives and gear dates back to 2005, when he started getting into the world of stuff that are designed to be with you anytime, anywhere. Nowadays his workshop is located in the city of Lappeenranta, Finland. He is continuously developing variety of EDC gear, knives & accessories. His point of view is transmitted through all the designs he creates, his motto is: "Perfection is Achieved Not When There Is Nothing More to Add, But When There Is Nothing Left to Take Away".



RYP

Robert Young Pelton is an author, journalist and documentary filmmaker. An iconoclast known for his entry into most of the world's conflicts over the last fifteen years, Pelton is known as an adventurer and a witness to conflict. His reputation is built on his interest and ability to enter forbidden, deadly and violent places and emerge with a stunning story. Pelton founded DPx Gear, Inc. in 2011 to create gear based on his needs for equipment in hostile and deadly environments.

LIONSTEEL DESIGNER

DEALER AREA

**REGISTER YOURSELF, BECOME AN AUTHORIZED DEALER
AND HAVE ACCESS TO ALL OUR SERVICES**

FAST ORDER APP

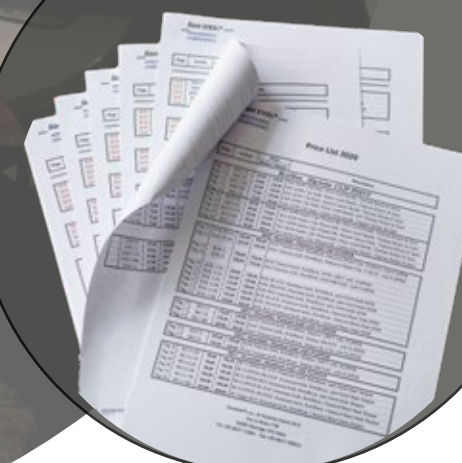
- Select the items you like at your guaranteed price.
- Check availablty and delivery time
- Verify the shipping cost

PRESS AREA

- You can download, use and print all our products pictures



PRICE LIST



DOWNLOAD CATALOG



GET TO THE WEBPAGE
www.lionsteel.it

Il coltello amico e strumento di lavoro

Per un perfetto utilizzo e mantenimento del coltello segui queste semplici regole:

Mantieni sempre il coltello ben affilato, un coltello ben affilato richiede meno forza nell'utilizzo ed è perciò potenzialmente meno pericoloso.

Mantieni sempre ben pulita la zona di bloccaggio del coltello, la sporcizia potrebbe far mal funzionare il sistema di bloccaggio, per pulire questa zona ti consigliamo di utilizzare aria compressa.

In molti dei nostri coltelli è presente acciaio con alte percentuali di carbonio per una migliore tenuta del filo.

Sfortunatamente il carbonio è l'elemento che causa la ruggine.

Consigliamo pertanto una pulizia frequente e l'applicazione sulla lama di un leggero strato protettivo di olio.

Hai dei dubbi a cui non trovi risposta?

Entra nel sito www.lionsteel.it ti aspetta una sezione dedicata al miglior utilizzo e ai metodi di mantenimento del coltello.

Inoltre hai la possibilità di richiederci ulteriori informazioni direttamente via e-mail a cui risponderanno i nostri fidati tecnici nel più breve tempo possibile.

The knife, a friend and a work tool

*For perfect use and maintenance of your knife,
please follow these simple instructions:*

Keep you knife well sharpened.

*A well sharpened knife requires less force to use
it and the potential hazard is therefore reduced.*

*Keep the locking area of the knife clean, dirt may
cause the locking mechanism to malfunction.*

We suggest to use compressed air to clean this area.

*In many of our knives there is steel
with a high percentage of carbon, in
order to keep them sharp longer.*

Unfortunately carbon causes rust.

*Therefore we suggest frequent cleaning and to
put a light coat of protective oil on the blade.*

Can't find what you are looking for?

Visit the site www.lionsteel.it.

*You will find a section about the better use
and maintenance of your knife.*

You can also ask for information directly by e-mail.

*Our technicians will answer you in
the shortest time possible.*

LionSteel WARRANTY

LionSteel knives are designed and built for use as cutting tools.

*Use of our knives for any purpose other than cutting is considered
abuse. As with any tools LionSteel knives can wear out.*

They may also fail to perform if not used or cared for properly.

*Table test is an abuse of the knife unconditionally voids the knife's
warranty.*

WARRANTY INFORMATION:

*LionSteel warrants that all of our products are free from defects in
material and workmanship. If a knife or other product fails to function
as it was designed, it should be returned to LionSteel's Warranty
Repair Department for examination and evaluation of the problem.*

*If we determine that there was a defect in materials or workmanship,
we will repair or replace it with the same model or one of comparable
value at our expense.*

*If LionSteel determines that the problem with a knife was not due
to a defect in materials or workmanship, we will assess our ability
to repair the knife and provide a quote for those repair services.*

*If LionSteel is unable to improve the condition of a knife, we will
return it with the recommendation it be retired from use.*

*LionSteel's warranty policy does not cover any damage caused by
disassembly, abuse, misuse, loss, improper handling, alterations,
accident, neglect, improper sharpening, or normal wear. Repairs
or modifications performed by any source other than LionSteel also
unconditionally void the knife's warranty.*

*All costs associated with shipment to returned product are the
responsibility of the customer.*

Please contact warranty and repair for more information:

e-mail: care@lionsteel.it

QUALITY CERTIFICATE

*LionSteel warrants that all of our products are free from defects in
material and workmanship. If a knife or other product fails to function
as it was designed, it should be returned to LionSteel's Warranty
Repair Department for examination and evaluation of the problem.*



ACTIVATION OF WARRANTY

- *Thank you for your choice; now, please register on line to activate the warranty*
- *Go to page www.lionsteel.it/warranty*
- *Follow the procedure to activate the Warranty*

For further information on the warranty: www.lionsteel.it/warranty



Dasa-Rägister

EN ISO 9001:2008

IQ-0616-02



CHAD NICHOLS

DAMASCUS
Chad began producing Damascus in 2003 and turned a hobby into his sole profession since 2005.
From the onset, his obsession was to manage to create his very own Damascus which would on the one hand afford excellent technical characteristics, given the good-quality raw materials, and on the other an artistic design which would stand out from the rest of the existing damascus products on the market.
This obsession for details allowed him in a very short space of time to establish himself as one of the best Damascus producers in the world.
All the Damascus bars are entirely hand-made by Chad Nichols
Indeed, it was this passion and attention to detail, both on the product and on its styling, which convinced us to pick Chad Nichols as our partner in the production of Damascus blades.



DAMASTEEL

DAMASTEEL
The family-owned company Damasteel has its seat in the heart of the Swedish steel industry, the small mill town of Söderfors. In this scenic environment, among forests, lakes and rapids, steel has been manufactured since 1676.
Damasteel has a world patent for its modern approach to manufacturing a stainless Damascus steel through using powder metallurgy. The product is unique in its absolute strength and sharpness. Our blacksmiths have a genuine knowledge of design, which makes the premium steel from Damasteel widely known for its beauty.

STEEL	C: CARBON	CR: CHROMIUM	MN: MANGANESE	SI: SILICON	MO: MOLYBDENUM	V: VANADIUM	NB: NIOBIUM	W: WOLFRAM	N: NITROGEN
Lohmann Niolox	0,8	12,7			1,1	0,9	0,7		
Uddeholm Sleipner	0,9	7,8	0,5	0,9	2,5	0,5			
Uddeholm Elmax	1,7	18	0,3	0,8	1	3			
Bohler D2	1,5-1,6	11-dic	0,35	0,3	0,75	1			
Bohler M390	1,9	20	0,3	0,7	1,5	4		0,6	
Bohler K490	1,4	6,4			1.1	3,7		3,5	
CPM MagnaCut	1,15	10,7			2	4	2		0,2
CPM M4	1,42	4	0,3		5,25	4		5,5	
CPM 3V	0,8	7,8			1,3	2,75			

ASSUMPTION OF RISK

By purchasing any item produced by LionSteel, Inc. the buyer assumes responsibility to research and comply with all applicable federal, state, local and international laws related to the ownership, possession, carry, transfer, shipment transport, and use of any LionSteel product. The buyer expressly agrees to indemnify and hold harmless LionSteel, Inc. for all claims resulting directly or indirectly from the purchase, ownership, transportation or use of the item in violation of applicable federal, state and local laws or regulations. LionSteel is not liable for the misuse of any LionSteel knife or product purchased either directly from LionSteel or from a dealer, distributor, or any other party. You must be 18 years of age to purchase LionSteel knives. Information in this catalog is subject to change without notice. LionSteel reserves the right to change or modify products, materials, measurements, technical specifications, pricing and availability.





LionSteel sas

di Pauletta Gianni M. D.

Via La Mola, 9

33085 Maniago (PN) Italy

Tel. +39 0427 71984

Fax +39 0427 709032

www.lionsteel.it
info@lionsteel.it